



SOCIAL DETERMINANTS WORK GROUP MEETING



Redding Consortium for Educational Equity
October 10, 2022

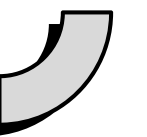
WELCOME & ROLL CALL



Welcome

BACK ◀

- Please mute yourself when not speaking
- Please note this meeting is being recorded and will be posted for the public
- Work Group members—please type your name in the chat for roll call



MEETING OVERVIEW



- DDOE Staffing Updates
- Equity Data Dashboard Updates
- Boost '22 and Boost '26
- Self-Care Series for Educators
- Public Comment





DDOE STAFFING UPDATES



Co-Chairs Jeff Menzer and Raye Jones Avery

DDOE STAFFING UPDATES



Our leadership team



Deputy Secretary
Cora Scott



Chief of Staff
Emily Cunningham



Chief Equity Officer
Jim Simmons



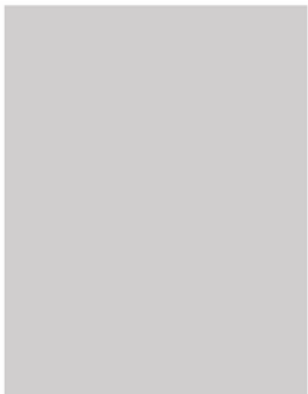
Early Childhood Support
Associate Secretary
Caitlin Gleason



Academic Support
Associate Secretary
Monica Gant



School Support
Associate Secretary
Mike Rodriguez



Workforce Support
Vacant



Operations Support
Associate Secretary
Kim Klein



DDOE STAFFING UPDATES



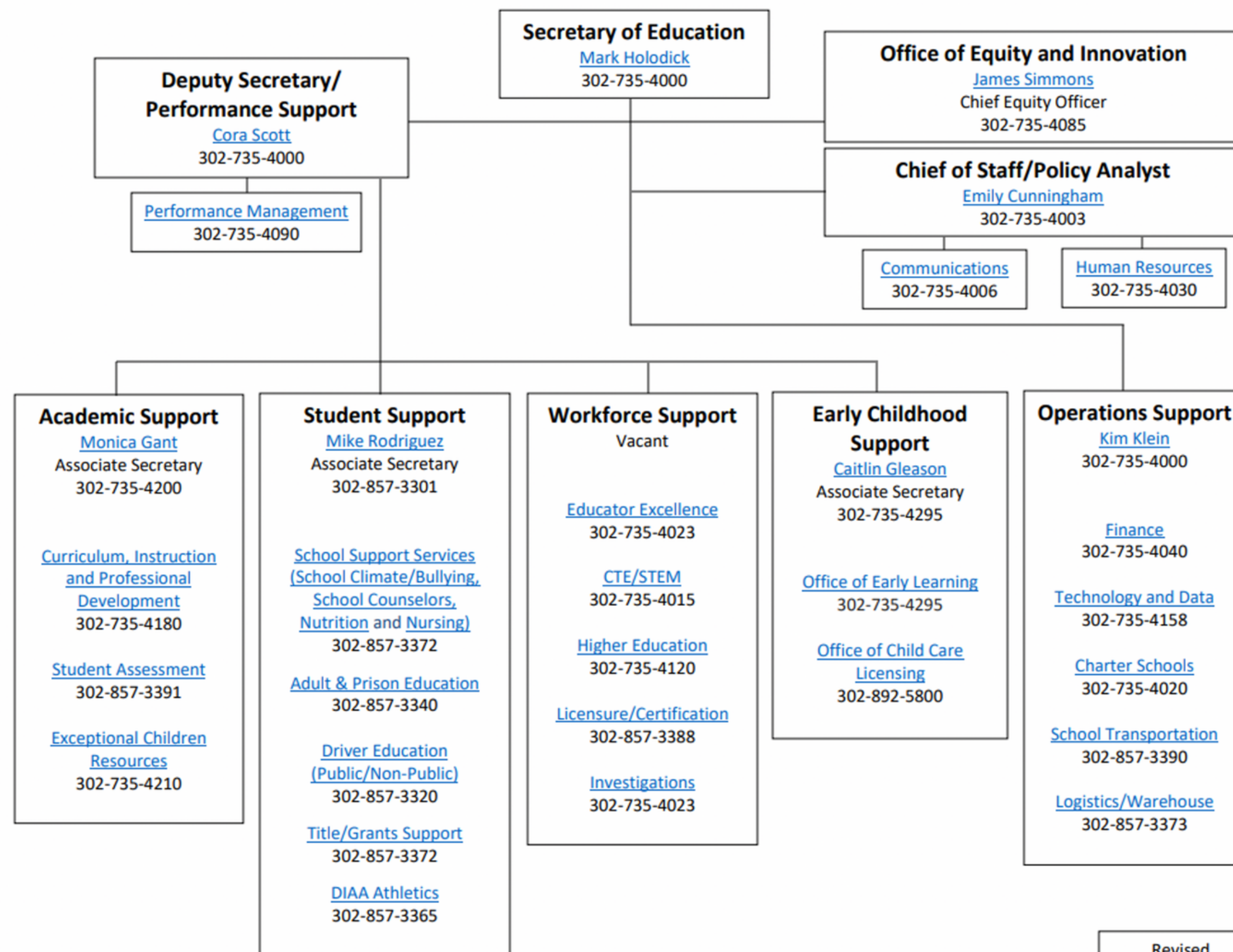
The newest directors are:

- Cassandra Codes-Johnson, joined from DPH
- John Fisher-Klein, a former DOE Office of Early Learning education associate who returned to DOE as director;
- Mike Saylor, an education associate who was promoted to director;
- Jon Wickert, an education associate who was promoted to director,
- Dale Matusevich, an education associate who was promoted to director

DDOE STAFFING UPDATES



Our organizational chart



Revised
08/01/2022

DDOE STAFFING UPDATES



Our directors

Curriculum, instruction and professional development: Kathy Kelly

Student Assessment: Theresa Bennett

Exceptional Children: Dale Matusevich

School Support Services: Cassandra Codes-Johnson

Adult and Prison Education: Maureen Whalen

Title/Grant Support: Eric Niebrzydowski

DIAA: Donna Polk

Office of Early Learning: John Fisher-Klein

Office of Child Care Licensing: Betty Gail

Finance: Jen Carlson

Technology and Data: Kristi Lloyd

Educator Excellence: Mike Saylor

Certification/Licensure: Wendy Modzelewski

Higher Education Office: Shana Payne

CTE: Jon Wicket

Other key area leads

Charter School Office: Leroy Travers

Transportation: Tyler Bryan



DATA DASHBOARD UPDATE

■ ■ ■

Katey Semmel, Data Service Center



BOOST '22 AND BOOST '26 UPDATE



Co-Chair Jeff Menzer

BOOST '22 & BOOST '26 UPDATE



Count of StudentID Row Labels	Column Labels		
	Yes	No	Grand Total
Brandywine	81		81
Christina	67	12	79
Colonial	5	2	7
NCC Vo Tech	147	14	161
Red Clay Consolidated	135	33	168
Grand Total	435	61	496

Count of StudentID Row Labels	Column Labels		
	Yes	No	Grand Total
Brandywine	100%	0%	100%
Christina	85%	15%	100%
Colonial	71%	29%	100%
NCC Vo Tech	91%	9%	100%
Red Clay Consolidated	80%	20%	100%
Grand Total	88%	12%	100%

Boost '22 Graduation Data



SELF-CARE SERIES FOR EDUCATORS

**WILMINGTON CENTER FOR EDUCATION
EQUITY AND POLICY**



Co-Chair Raye Jones Avery

SELF-CARE SERIES FOR EDUCATORS



The Wilmington Center for Education Equity and Policy is launching a pilot series on Friday October 28th at the Delaware History Museum at 5pm.

"Fill Your Bucket" is a three-part series intended to create safe spaces for pre-K-12 *teachers, paraprofessionals, nurses, counselors and behavior interventionists serving Wilmington students (both in the City and in NCC).*

Led by Kim Graham, Trauma Institute Director at Delaware State University, participants will experience an evening of self-care strategies combined with social bonding at area cultural organizations.

There is no cost for registration.

Register for all three events with this link: <https://buytickets.at/wceep>



SELF-CARE SERIES FOR EDUCATORS



Event 1: WHO AM I? Who Are We?

Date & Time: Friday October 28, 2022 5-7:30pm

Take time to re-examine, re-visit and re-center for self-growth and self-fulfillment. Embracing the gift that You are to yourself; your environment and your profession is restorative. This session will take us on a journey to the center of it all: YOU!

Location: Delaware History Museum, Mitchell Center for African American Heritage Center 504 N. Market St. Wilmington, DE

Event 2: Who Run's The World?

Date & Time: Friday November 18, 2022 5-7:30pm

Educators are pivotal to the growth of a nation. Because your role is so embedded into the fabric of life, it can be easy for others to minimize your worth. But if you ruled the world, what would you change? In this session, participants will dare to dream and envision their “next level” of greatness. Wear sneakers/comfortable attire.

Location:

Meet up @ Community Services Building 100 W. 10th St. Wilmington, DE
Part 2 @ WILMA 900 N. Market Street Wilmington, DE

Event 3: When Your Fuel Light Comes on

Date & Time: Friday December 2, 2022 Holiday Loop 5-8pm

Some of us never let our tanks get below half-a-tank. Others have figured out just how far we can go once the light comes on. This session will explore the mandate to refuel, restore and revive the gift that You are BEFORE you are on E.

*Social includes light fare and beverages

Location: The Delaware Contemporary, 200 S. Madison St. Wilmington, DE





PUBLIC COMMENT

3 minutes per comment, thank you!

