



Redding Consortium for Educational Equity

Full Body Meeting

SEPTEMBER 27, 2023

Meeting Agenda

I. Welcome

II. Minutes

III. Redding Consortium Co-Chairs Updates

IV. Work Group Updates

V. Public Comment

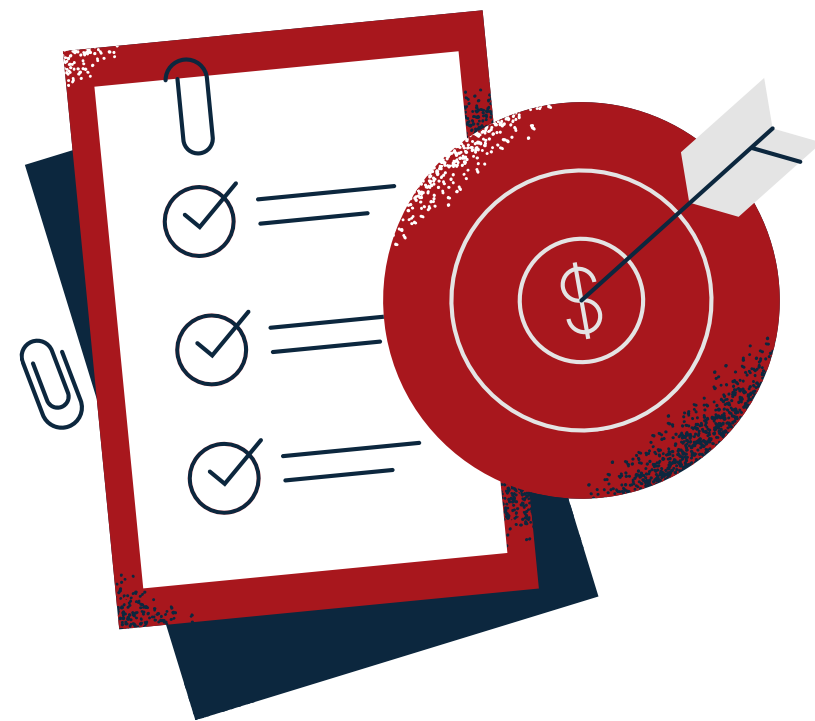
Welcome!



- **Reminder, this is a hybrid meeting**
- **Please announce your name before speaking to identify yourself**
- **Please mute yourself when not speaking**
- **Please note this meeting is being recorded and will be posted for the public**
- **Consortium members—please type your name in the chat for roll call**

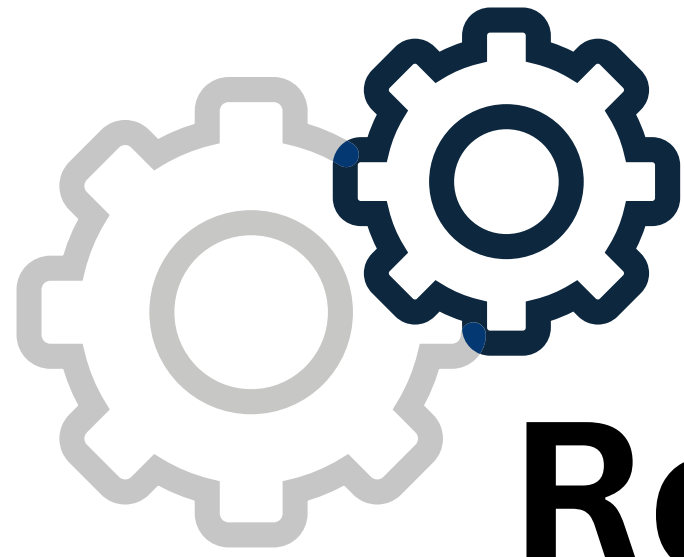
Meeting Minutes





Co-Chairs Update

Senator Lockman and Matt Denn,
Redding Consortium Co-Chairs



Redding Action Items: Status Update

Goal 1: Fulfill Redding Charges & Follow-through on Initiatives

Action Items:

- Expanding Full-day State-Supported ECAP for Wilmington Students
- Expanding Wraparound Services for Wilmington Students and Families
- Providing Scholarships for Educators at Redding Schools
- In Progress: Plan for Whole School Professional Development (PD)
- In Progress: Create a Data Dashboard Focused on Wilmington Students
- In Progress: Publish Yearly Data Report on Wilmington Students (21-22 SY data)

Goal 2: Define the relationship between Redding & the Wilmington Learning Collaborative (WLC)

Action Items:

- Redding Consortium and WLC Alignment document created and shared
- In Progress: Redding Consortium Co-chairs and WLC Executive Director monthly check-ins
- In Progress: WLC is conducting a landscape analysis to inform work and coordination with Redding on a joint effort for professional development

Goal 3: Collaborate with organizations & community partners on issues related to public education

Action Items:

- Coordination with DDOE on Full Day Preschool, Scholarships, Whole School PD
- Coordination with DDOE and Data Service Center on Redding Data Dashboard
- Coordination on Wraparound Services with:
 - The Bancroft School
 - The Bayard School
 - Kuumba Academy Charter School
- Coordination on Full Day Preschool with:
 - Kingswood Community Center
 - Latin American Community Center
 - A Leap of Faith Child Development Center
 - St. Michael's School and Nursery

Redding Consortium Impact Report



Since 2020, the Redding Consortium for Educational Equity has made considerable investments in Wilmington students and their future.

\$30M

Funding

\$30 million has been invested since 2020 towards Wilmington students, families, and educators

\$10.2M

Funding

\$10.2 million is secured in recurring funds in the Delaware budget to support Wilmington students, families, and educators

11,000+

Students

The Redding Consortium Data Report tracks the progress of over **11,000 Wilmington students** every year

499

Early Learners

Redding funds helped expand full-day pre-k seats for **499 Wilmington children**; the Redding ECAP model was adopted statewide

136

Scholarships

136 scholarships were awarded to eligible educators and school employees at Redding Consortium Schools since the fall of 2022

Community Update



Dr. Laura Burgos
Executive Director,
Wilmington Learning Collaborative



Redding/ECAP Update

Caitlin Gleason

Associate Secretary, Early Childhood Support
Delaware Department of Education

Redding/ECAP Update



Addressing points raised about ECAP during the last full body meeting:

- DDOE Deputy Secretary Cora Scott reached out directly to providers to follow up, visited those locations in person, and worked with providers to address the ECAP issue.

General Updates about Redding Full Day Pre-K Program

- **499 full-day Pre-K seats** are offered by Redding in Wilmington.
- Due to the combining of Redding and ECAP, the program is now classified as “**state funded contracted seats**” instead of “Redding funded seats” or only as “Redding full-day pre-K.”

Number of 3 and 4 year old seats meeting Redding requirements	
A Leap Of Faith	20
Blossom & Bloom Learning Center	10
Christina Cultural Arts Center	35
Kingswood Community Center	30
Latin American Community Center	60
Precious Little Hands II	10
Seeds of Jesus	9
St. Michael's School and Nursery	65
Tender Care Learning Academy	22
Hilltop Lutheran Neighborhood Center	(50)



Social Determinants Work Group Update

**Raye Jones Avery and Jeff Menzer,
*Social Determinants Work Group Co-Chairs***



Redding Data Dashboard Update:

Katey Semmel, *Data Service Center*

Kristi Pelezo, *Delaware Department of Education*

The City of Wilmington Educational Dashboard

Seeing City of Wilmington Students through an Equity Lens

Explore Student Data

Explore Educator Data

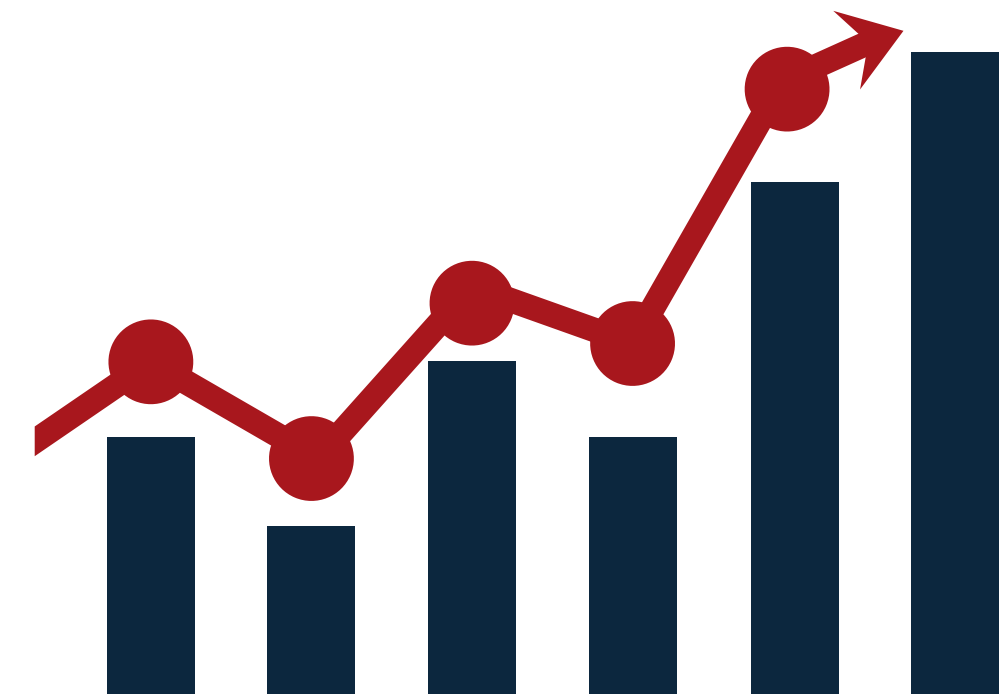


Project Phases

Phase 1: Define Requirements - Complete

Phase 2: Gather the Data - In Progress

Phase 3: Develop the Dashboard - TBD



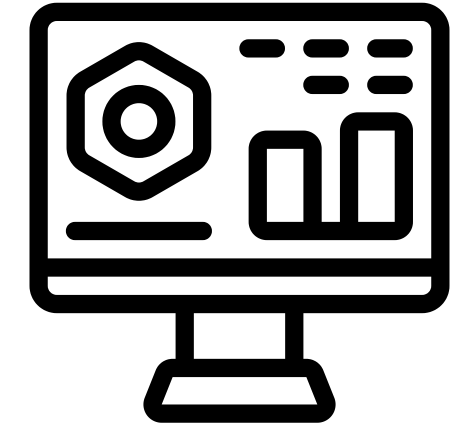
Phase 1: Define Requirements

- **Defined the 1st Iteration of the Equity Dashboard**
 - Focus Group members met weekly for approximately 2 months to define requirements.
 - Focused on data that is currently available and doesn't require schools to collect additional data or change processes.
- **DSC provided a Prototype and detailed Design Document**
 - Will be used to guide Phase 2: Gather the Data

[Public Dashboard \(adobe.com\)](#)



Phase 2: Gather the Data



- **Purpose**

- Prepare the data needed to populate the Equity Dashboard.
- Determine if there are any gaps and/or inconsistencies in the data that needs to be addressed.

- **Deliverables**

- Provide appropriate data that resides within in the DSC Infrastructure.
- Provide a document outlining data consideration including gaps and inconsistencies as well as any recommended design changes as a result of the data modeling work.
- Provide a document which allows for evaluation of the data using Excel, [Tableau](#), PowerBI or similar.

Phase 2: Priorities



- **Align City of Wilmington tag from GeoCode with Students**
- **Student Data**
 - *Demographic* - Enrollment, Gender, Race, Ethnicity, Special Programs
 - *Behavior* - ISS, OSS, ISS by Days, OSS by Days
 - *Proficiency* - ELA Grades 3-8, ELA Grade 11, Math Grades 3-8, Math Grade 11
 - *Other Academic* - Course Rigor, CTE Courses
 - *Absenteeism* - Chronic Absenteeism, Excused Absences, Unexcused Absences, Tardies
 - *Other Academic* - Related Arts Courses
- **Educator Data**
 - *Demographics*
 - *Student/Educator Ratio*

Phase 2: Timeline

- Estimated Duration: 4-6 months
- Estimated Start: Fall, 2023
- Estimated Completion: Spring, 2024





Educator Initiatives Update

**Rep. Mike Smith and Noelle Picara,
*Educator Work Group Co-Chairs***

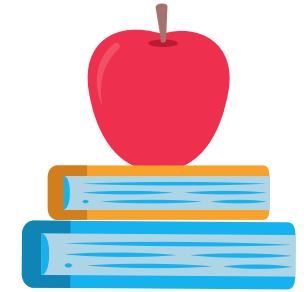
Redding Scholarship Updates:



General updates:

- **136 total scholarships** have been awarded since the fall of 2022
 - **71 scholarships** have been awarded during the summer/fall 2023 term
 - **Pulaski Early Education Center**, which recently opened this school year, has been added to the list of eligible schools for the scholarship
 - **Application deadlines for coursework** taken during winter 2023-2024 and spring 2024 will be announced soon
 - [The Financial Supports for Delaware Educators webpage](#), recently launched by DDOE, is dedicated to Delaware educators
 - This webpage is where the Redding scholarship information is now available

Educator Initiatives Updates:



Goals and vision for the work moving forward:

- The Educator Work Group will not formally reconvene as a work group
- The internal team will continue to implement and follow through on the current initiatives
 - Oversight of the initiatives and coordination with DDOE and IHEs
- Tika Hartsock, a Redding Consortium member, will join our team to help coordinate and implement the educator initiatives
- **Educator initiatives:**
 - Redding Schools Support Scholarship
 - WLC and Redding Professional Development Coordinated Plan



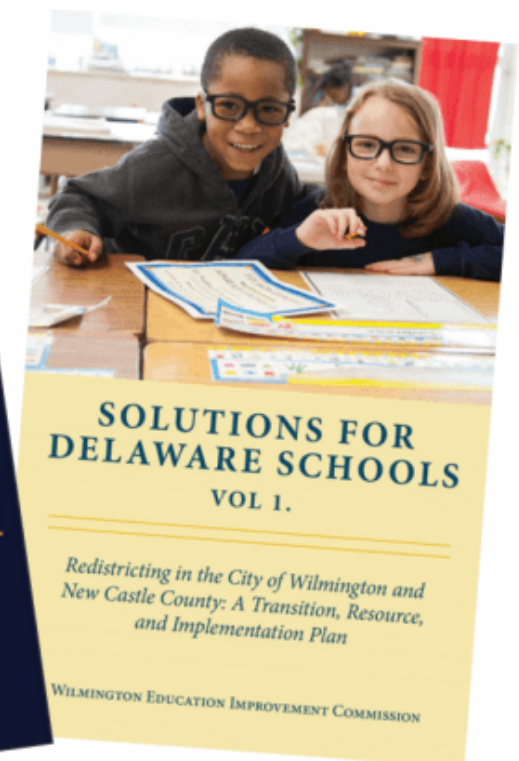
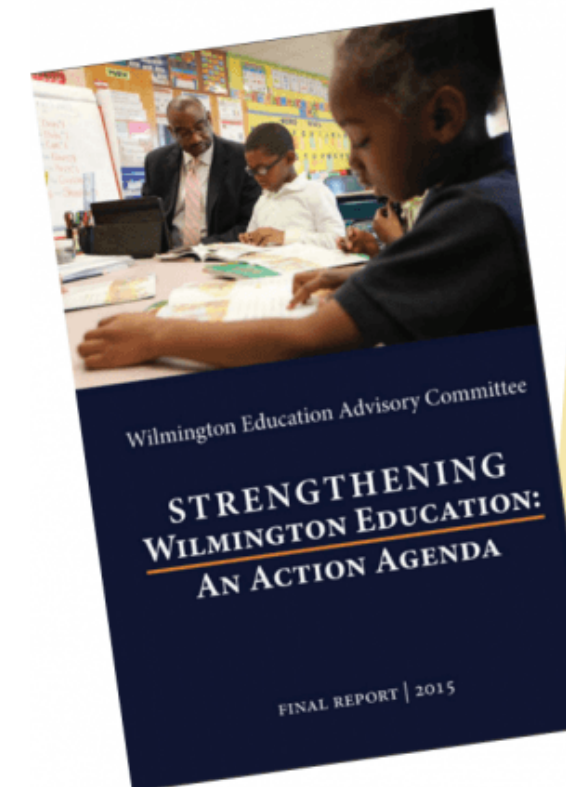
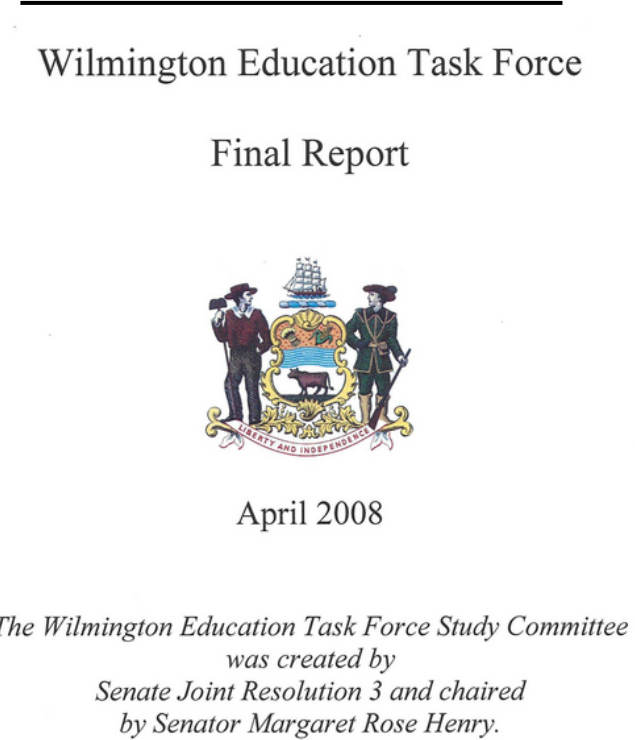
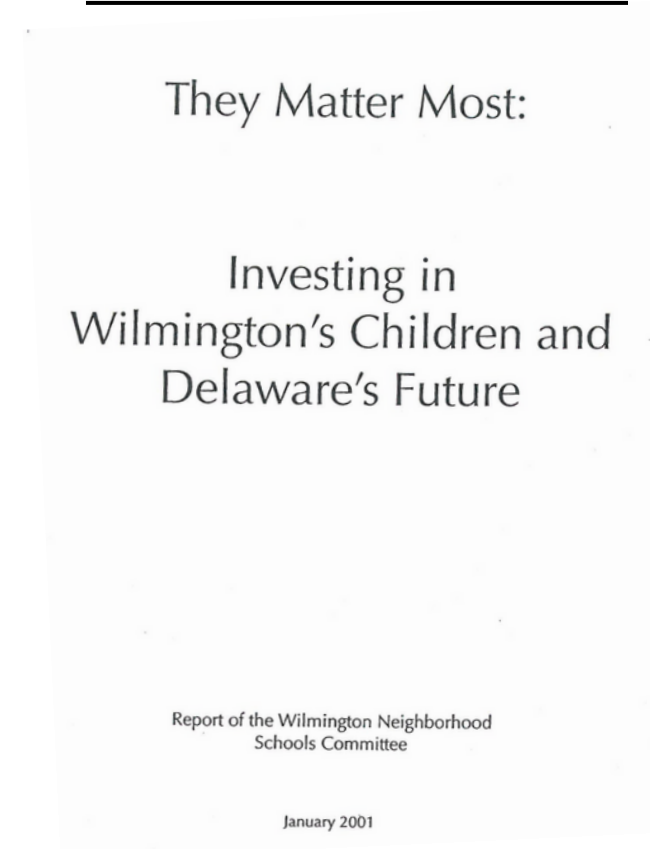
Redistricting & Governance Update

Councilman Jea Street and Senator Lockman,

Funding and Governance Co-Chair and Redding Consortium Co-Chair

Redistricting Next Steps

- Work Group Co-Chairs are leading the development of a work plan and legislation for redistricting for 2023-24
- The co-chairs have reviewed and consulted previous governance plans from educational stakeholder commissions
- Stakeholder engagement in the development of the redistricting plan will begin soon

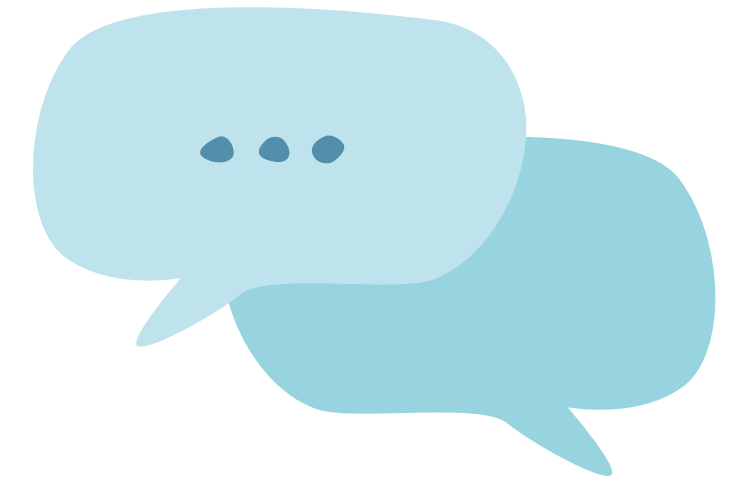


Redistricting Work Plan



Why Redistricting Should be the Next Step?

- Redistricting and governance change is only one piece of the puzzle to addressing student outcomes. This change will help address district fragmentation, promote cross-district collaboration, and improve support for schools to meet the needs of Wilmington students.



Public Comment

3 minutes per comment, thank you!